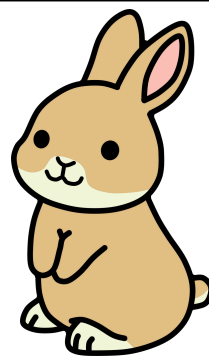
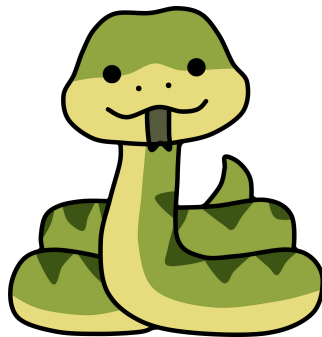
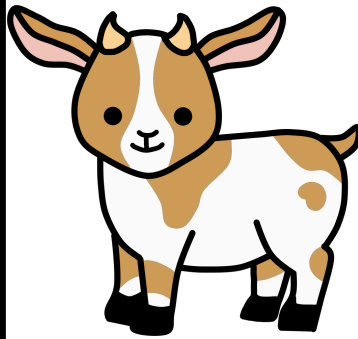
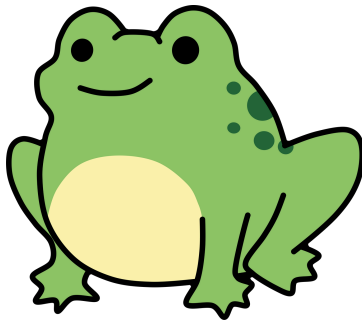
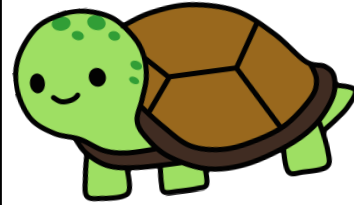
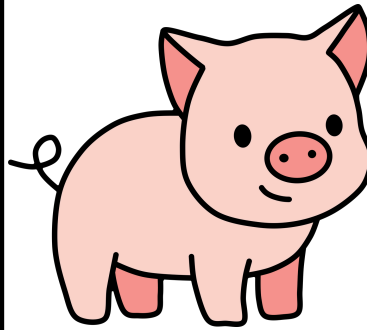
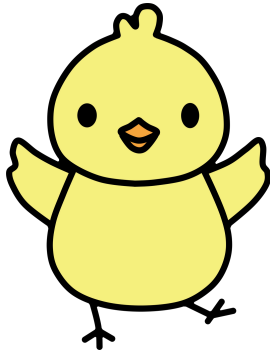
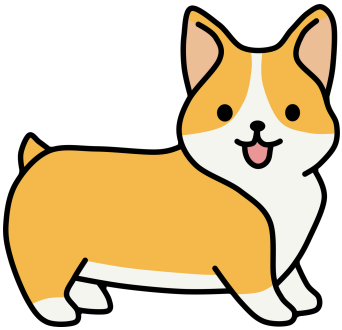
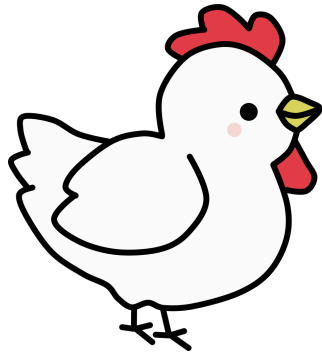
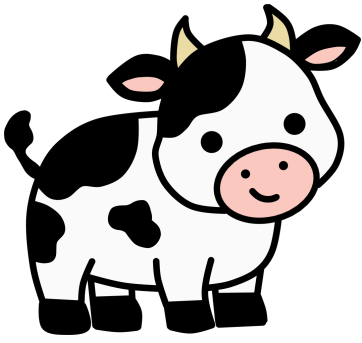
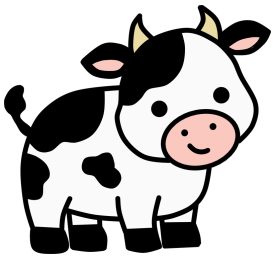
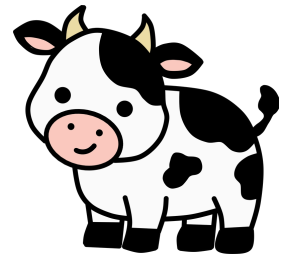


Animal Adventure





Village of Waunakee Animal Adventure



Get Out and Explore Our Village!
October 1 - 31

One Animal picture is hidden outdoors at each of the following locations:

- [Waunakee Public Library - 201 North Madison Street](#)
- Waunakee Village Center - 333 South Madison Street
- [Montondon Park - 1211 Lawton Lane](#)
- Schumacher Farm Park - 5682 Hwy 19
- [Village Park - 410 East Main Street](#)
- Six Mile Bike Path - West of Madison Street, across from Waunakee Public Library
- [Woodland Wayside - 2009 Foggy Mountain Pass](#)
- Laubmeier Park - 1155 Prairie View Drive
- [Village Center Pond - entrance at corner of East Third Street and South Madison Street](#)
- Castle Creek Conservancy - 900 South Division Street
- [Centennial Park - 901 South Holiday Drive](#)
- Watertower Park - 417 East Verleen Avenue
- [Ripp Park - 213 Dorn Drive](#)
- Bolz Conservancy - 1411 Tierney Drive
- [South Side of East Main Street](#)
- Dublin Park - 2607 Dublin Way

Name: _____

Phone: _____

Visit each location (outside only) and find the sign with the Animal picture. Write down the location under the matching picture on your Bingo sheet. Find 4 pictures across, down, or diagonal to win a Bingo prize. Bring your winning Bingo card to the Village Center to claim your prize. Fill in all 16 pictures and turn it in at the Village Center by **Noon on Friday, November 1** to be entered in our Grand Prize Drawing.

Questions?

Contact **Connie Gavinski at the Village Center**
cgavinski@waunakee.com | 608-850-5992
 or **Brittany Gitzlaff at Waunakee Public Library**
bgitzlaffewaupl.org

